

 go green spain
forward thinking...



GoGreenSpain are Bringing the Costa del Sol Housing Sector into the 21st Century.

Recognising a surge in demand for Higher Quality, Energy Efficient Homes, GoGreenSpain have been actively introducing a build system onto the Costa del Sol which achieves all of these. Homes are delivered expediently whilst adhering to the highest standards currently available on the market.

Passive Villas, Fusing Stunning Architecture with Eco-Awareness.



The Essence of Modern Living.

GoGreenSpain homes incorporate the patented modular build system “SEH” (Sustainable Energy Housing) which removes the deficiencies associated with local traditional build methods. Our modular build system is not only fast and efficient, but also allows for health and well-being to be incorporated into the architectural process. **Quality, Efficiency & Sustainability.**



The Perfect Environment to Bask in the Mediterranean Lifestyle.

Our state of the art architecture reflects all the latest trends. Timeless homes that are not only stylish & comfortable, but are also functional, safe & healthier living environments. Our elegant villas are open-plan and rich in natural light. Large windows ensure internal and external areas merge seamlessly, expanding out to gardens framing private swimming pools. **Healthy, Safe & Secure.**





High End Finishings and Materials Throughout.

The design, technology and functionality ensure the comfort and well being of the residents. Top of the range underfloor aero-thermal heating and cooling system throughout all floors. Security glass with both solar gain and acoustic treatment provide comfortable and safe interior living spaces. Fully fitted high spec. kitchens & bathrooms. **Luxury and Peace of Mind.**





Eco awareness co-exists with stunning contemporary aesthetics within masterpiece villa designs.

Example villa design & floorplan.



Ground floor



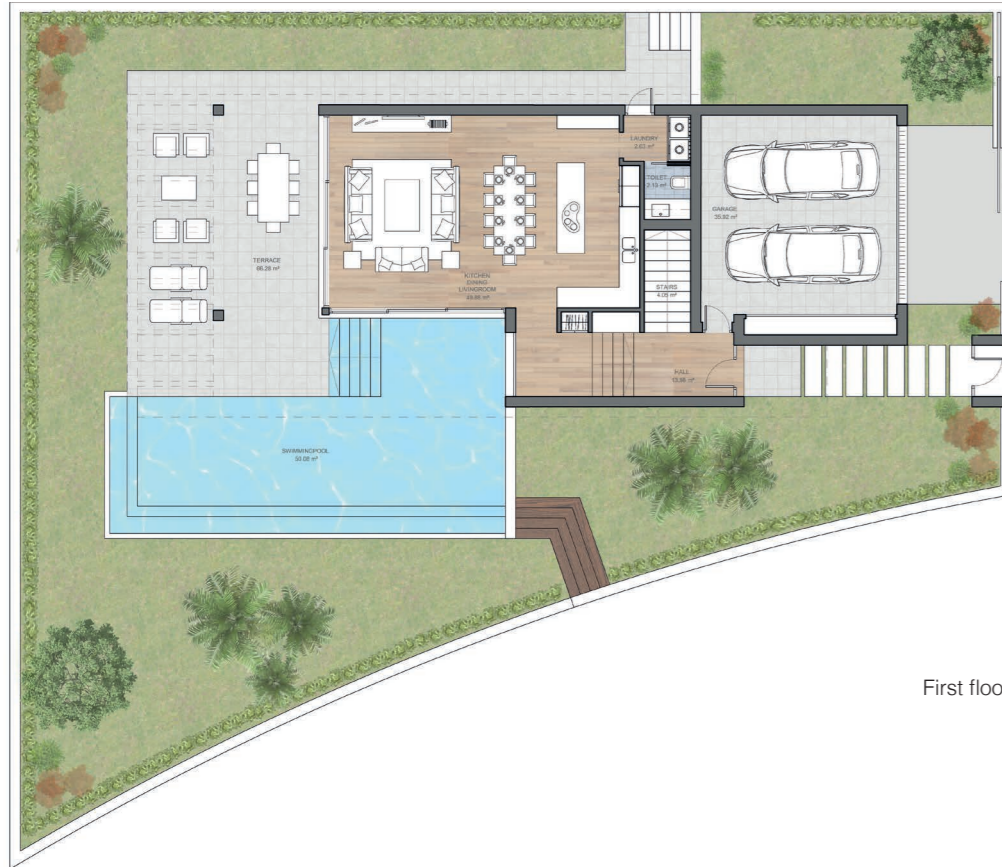
First floor

SUPERFICIES CONSTRUIDAS						
	VIVIENDA	SAUNA	GARAJE	TERRAZA CUBIERTA	TERRAZA DESCUBIERTA	TOTAL
PLANTA BAJA	158.50 m ²	9.82 m ²	42.02 m ²	48.03 m ²	50.89 m ²	309.26 m ²
PLANTA PRIMERA	176.1 m ²				24.44 m ²	200.54 m ²
TOTAL	334,6 m²	9,82 m²	42,02 m²	48,03 m²	75,33 m²	509,80 m²

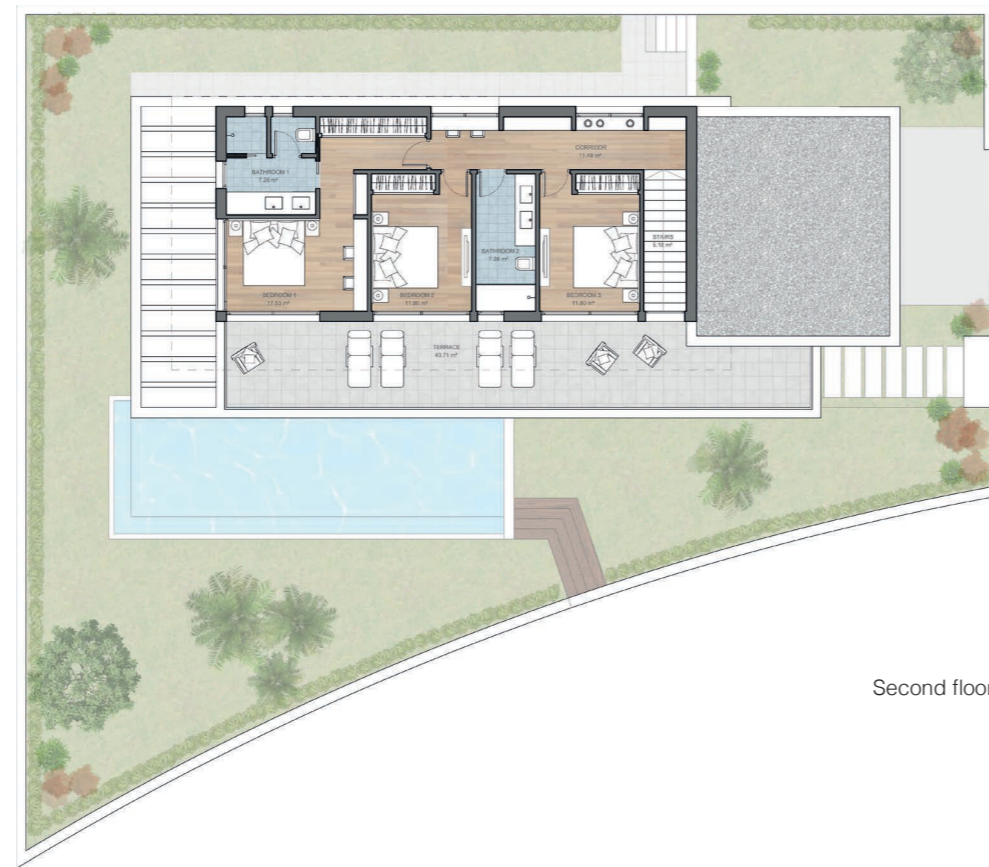
OTRAS CONSTRUCCIONES	
PISCINA	33.20 m ²
ACCESO GARAJE	52.64 m ²
ACCESO PEATONAL	22.37 m ²
JARDIN	638.07 m ²



Example villa design & floorplan.



First floor



Second floor

CONSTRUCTED SURFACES					
	HOUSE	GARAGE	COVERED TERRACE	UNCOVERED TERRACE	TOTAL
FIRST FLOOR	85.55 m ²	42.38 m ²	30.89 m ²	35.37 m ²	194.19 m ²
SECOND FLOOR	88.98 m ²			47.34 m ²	136.32 m ²
TOTAL	174.53 m²	42.38 m²	30.89 m²	82.71 m²	330.51 m²

OTHER CONSTRUCTIONS	
SWIMMINGPOOL	58.25 m ²
GARAGE ACCESS	15.12 m ²
PEDESTRIAN ACCESS	11.59 m ²
GARDEN	233.85 m ²





Interactive Design Process.

Our all inclusive villa projects provide flexibility, from the interior and exterior layout, through to the finishes. Working closely with our renowned architect you can achieve your needs and desires. Get inspired by viewing past projects and be expertly advised on how to maximise the potential of the plot selected by you. Thoughtful villa designs that match a lifestyle whilst keeping your budget in mind. **Bespoke Villas Tailored to You.**



Multiple projects available in desirable areas up and down the Coast.

Project includes:

- ✓ The land
- ✓ Architects
- ✓ All necessary licenses and relevant construction insurances
- ✓ Villa construction
- ✓ Thermal & acoustic insulation, aero-thermal underfloor heating system
- ✓ Security glass with both solar and acoustic treatment throughout
- ✓ High specification fitted kitchen and bathrooms with quality tiling throughout
- ✓ Swimming pool
- ✓ All utility connections
- ✓ Basic landscaping
- ✓ All exterior surrounding walls, electric entrance gates and garages

An All Inclusive
“Key in Hand”
Passive Villa.

**Friendly Payment
Plan.**





Residencial Bellevue Benalmádena Pueblo



Sophisticated Luxuries, Complimented by the Charm of Pueblo Living.

An exclusive development of 24 luxurious green energy townhouses. Contemporary homes comprising of 2/3 bedrooms and 3 bathrooms, set within a secure gated community. All homes are south facing with breathtaking sea views. Energy efficient homes with a minimal carbon foot print.



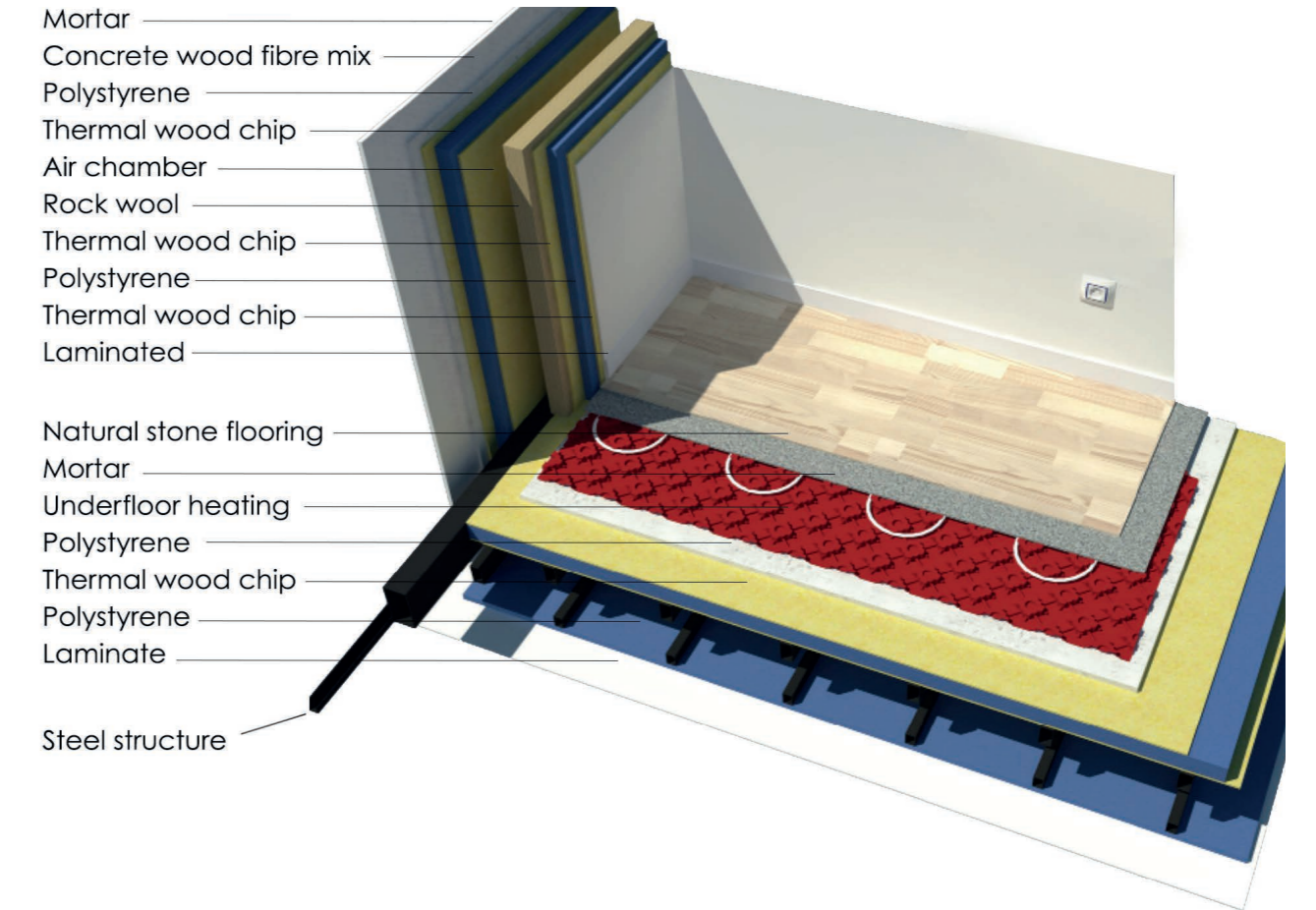
6 Months Construction - Manufactured Off-Site and Erected On Site.

The construction process is split into 2 smaller projects that are developed in parallel. Foundation and structure will be both monitored and enforced in accordance with Spanish and European regulations

A truly efficient home
with guaranteed
“A” Rated Energy
Certificate.

A patented wall composite
that guarantees thermal &
acoustic insulation.

An extremely resilient system
based on a precision
engineered steel structure
throughout.



Aero-thermal System

A Complete Heating & Cooling System.



- Optimum internal temperatures
- Ambient temperature throughout
- A healthier living environment
- Huge savings on energy bills
- An eco-friendly system

Lower energy consumption and greater respect for the environment by utilising a natural, non-polluting, inexhaustible energy source.

Considered a renewable energy system, aero-thermal systems extract energy from the air, transferring it to another place in the form of cold or heat. Energy is transmitted to a heat pump, which uses a thermodynamic device to heat or refresh your home.

Passive Windows

“Intelligent Glass”
Fitted As Standard Throughout.



- Smart solar control
- Enhanced thermal insulation
- Maximum transparency
- Noise prevention
- Security

Protecting the environment without losing the luminosity and transparency of traditional glass.

Windows that ensure high light transmission, excellent thermal insulation and protection against solar radiation. Obtaining significant energy savings and contributing to reducing CO2 emissions into the atmosphere.

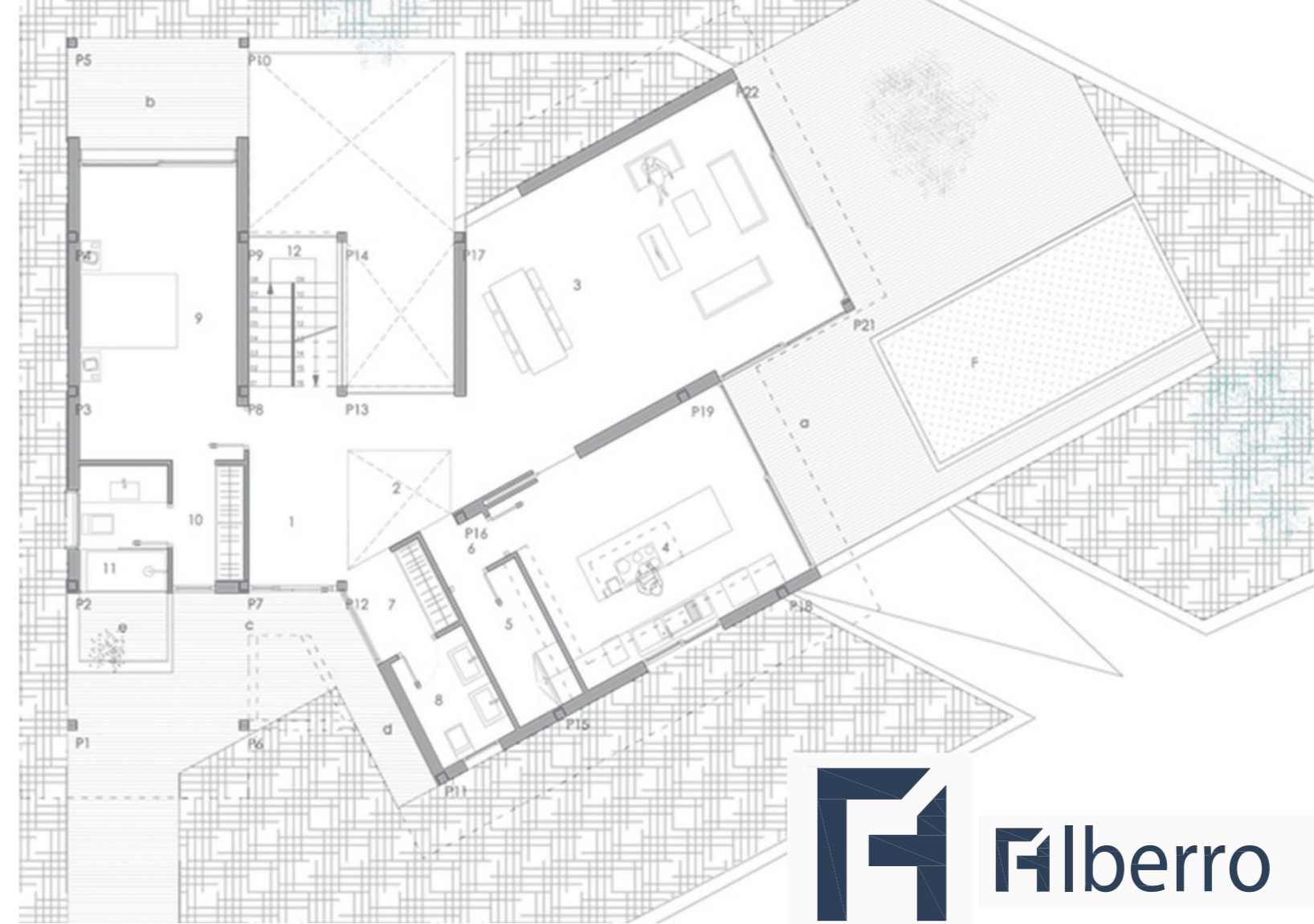
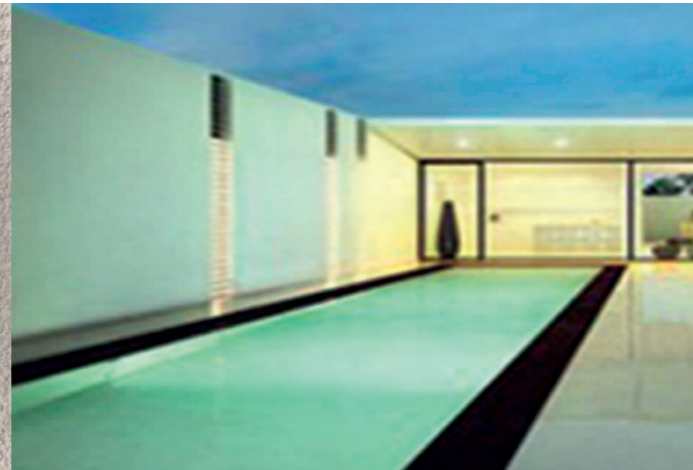
Home Automation



Security System



Swimming Pool



Alberro Arquitectos

A major contribution to the success of GoGreenSpain is attributable to our architect Javier Alberro and his team.

With three decades of experience in the local market, Javier has deservedly earned a reputation and respect for his creative and contemporary projects.

Always striving to raise the standards, Javier has continuously embraced both high quality and high energy efficient construction methods.

“It is a great pleasure to work with the team at GoGreenSpain; without doubt the future is green!”



Argenta model KURSAALASHE



Kitchen and Bathrooms: Premium floor tiles brand ARGENTA or KERABEN or similar

Quality Specifications

FOUNDATION AND STRUCTURE

Foundation – Reinforced Concrete Slab with appropriate waterproofing and drainage at ground level.

Structure – Reinforced Steel Framework throughout. Foundation and structure will be both monitored and enforced in accordance with Spanish and European regulations.

WALLS

Walls. – An extremely insulative composite of concrete, wood fibre, polystyrene, thermal wood-chip and rock-wool to a total depth of 32cm.

ROOF

Inverted flat roof - inaccessible. An extensive roof system consisting of an anti-root polyethylene membrane, plus a drainage system.

FACADES

Finished mortar of water-repellent cement, screeded and painted.

WALL FINISHES

Walls are painted in a sand/beige colour and the ceilings white. Ceilings are constructed of waterproof plasterboard, coated with plastic paint.

FLOORING

Stairs: Cladding marble.

Living Room: Premium porcelain stoneware floors, brand ARGENTA or KERABEN or similar.

WALL TILES

Bathrooms, kitchen and laundry room: premium porcelain tiles, brand ARGENTA or KERABEN or similar.

KITCHENS

Fully fitted quality units.

Appliances: AEG, SIEMENS or similar, includes fridge, oven, extractor & ceramic hob.

Silestone Worktops.

Water Taps: Brand GROHE or similar.

INTERIOR WOODWORK

The entrance door will be superior quality African Teak.

The main entrance doors will be armoured.

Interior doors will be painted white with the classifications EI230 fire resistance and 30 dB sound resistance with locks in the bathrooms and main bedroom.

Fitted wardrobes lacquered outside and lined inside with melamine.

BATHROOMS

Sink furniture fitted in all bathrooms white, brand VITABOX, 80 cm wide.

White premium quality porcelain washbasin, toilet and bidet, brand VILLEROY & BOCH.

TAPS AND BATHROOM FITTINGS

Water taps of premium quality brand GROHE. Overhead shower, brand GROHE.



TV & TELEPHONE

TV antenna fittings in the living room and bedrooms.

Phone installation and internet access points in the living room and bedrooms.

SECURITY SYSTEM

Video intercom with television camera and monitor brand FERMAX DIGITAL, ABB or similar.

DOMOTICS

Basic Home automation system installed. Upgradable to control security, video entry system, air conditioning and ventilation, energy savings, or lighting. Access the Control Panel via internet, telephone or the remote control.

ELECTRICITY AND MECHANISMS

All installations to conform to technical Regulations. Mechanisms will be used of premium makes and quality.

TERRACES

Steel and glass railings on terraces.

GARAGE/CARPORT

On houses with car park: concrete pavement.

On houses with underground garage: access doors for vehicles with a remote control opening.

Concrete pavement on floors.

Vertical surfaces in smooth plastic paint.

AIR-CONDITIONING

AERO-THERMAL (renewable energy) air-conditioning system with a hot/cold pump. Brand VAILLANT, SAUNIER DUVAL or similar with low acoustic emission. Ducts and linear grills fitted in dropped ceilings.

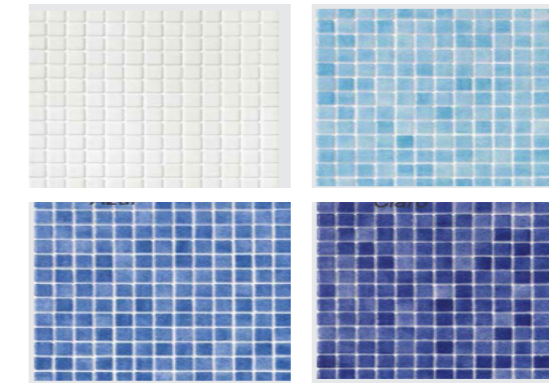
UNDERFLOOR HEATING/COOLING

AERO-THERMAL VAILLANT, SAUNIER DUVAL or similar (renewable energy) water based system installed throughout ground and first floor.

SWIMMING POOL

4 x 8 concrete built swimming pool.

High quality tiles brand ALTTOGLASS or similar, with choice of colours. Concrete stairs.



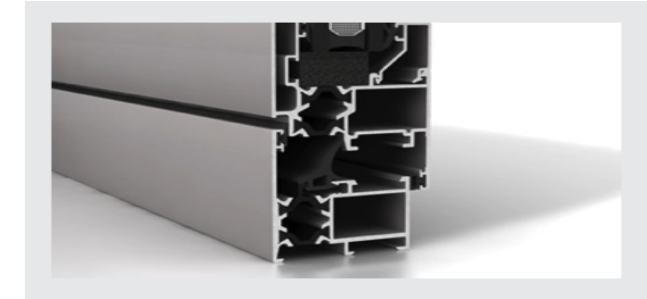
INCLUDED

Entrance wall, motorised door and plot surrounded with "Hercules" fence, basic landscaping.

WINDOWS

High quality aluminium windows brand CORTIZO or similar, with thermal break. Security double glazing (8/14/4+4) with Guardian Sun solar gain treatment for maximum heat/cold insulation.

Windows fitted with electric blinds.



The non-availability of a make or model for reasons beyond Seh/GoGreenSpain's control, entitles Seh/GoGreenSpain to replace them with another brand(s) or model(s) with similar characteristics. The images included in this document are used only conceptually and may not accurately represent the final design.



 go green spain
forward thinking...

noun: forward thinking - the act of thinking about and planning for the future, not just the present.

adjective: forward thinking - favouring innovation and development.



tel: **(0034) 951 121 865** email: **info@gogreenspain.com** visit: **www.gogreenspain.com**

CC El Higuero Privé, Avda. de Retamar, Oficina 15, Benalmádena,